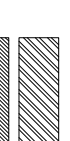
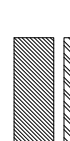
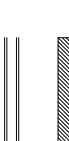


NOTES:
This drawing is the copyright of Ark|tec Ltd and has been sent to you in confidence. It must not be reproduced or disclosed to third parties without our prior permission.
Do not scale from this drawing except for planning purposes.
All dimensions are in millimetres unless noted otherwise.
Any surveyed information incorporated on this drawing cannot be guaranteed as accurate unless confirmed by a fixed dimension.
This drawing is to be used in conjunction with all the relevant conditions, schedules and manufacturers drawings and information.

MATERIAL LEGEND



-  Facing brickwork
-  7.5N/m² blockwork
-  Internal non-loadbearing partition with insulation between

NOTE: BLOCK STRENGTHS TO BE IN STRICT ACCORDANCE WITH ENGINEER'S ADVICE

GENERAL LEGEND

- FHB = Full Height Boiling
- MLB = Medium level Boiling
- LLB = Low level Boiling
- SYP = 50k Vent Pipe
- FS = Floor Socket
- RWP = Rain Water Pipe
- D1 = Door 1
- 838FD201 = 20 Minutes Fire Resistance
- 838FD301SIC = 30 Minutes Fire Resistance (Smoke Seal & Intumescent Strip), Self-Closing Door
- W2 = Window 2
- M1 = Movement Joint (in accordance with engineers details)

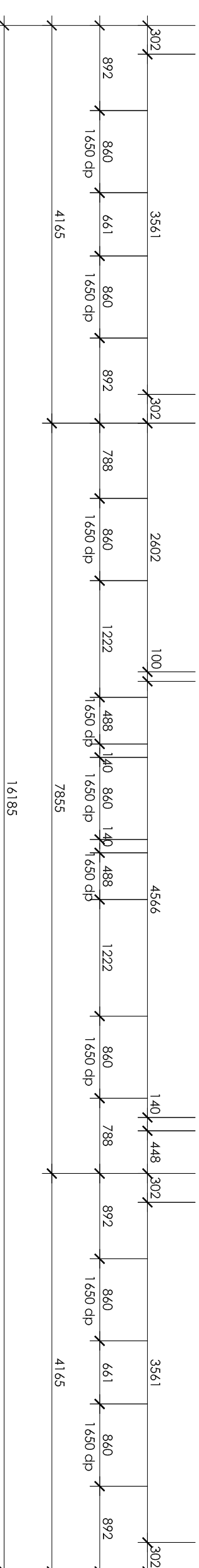
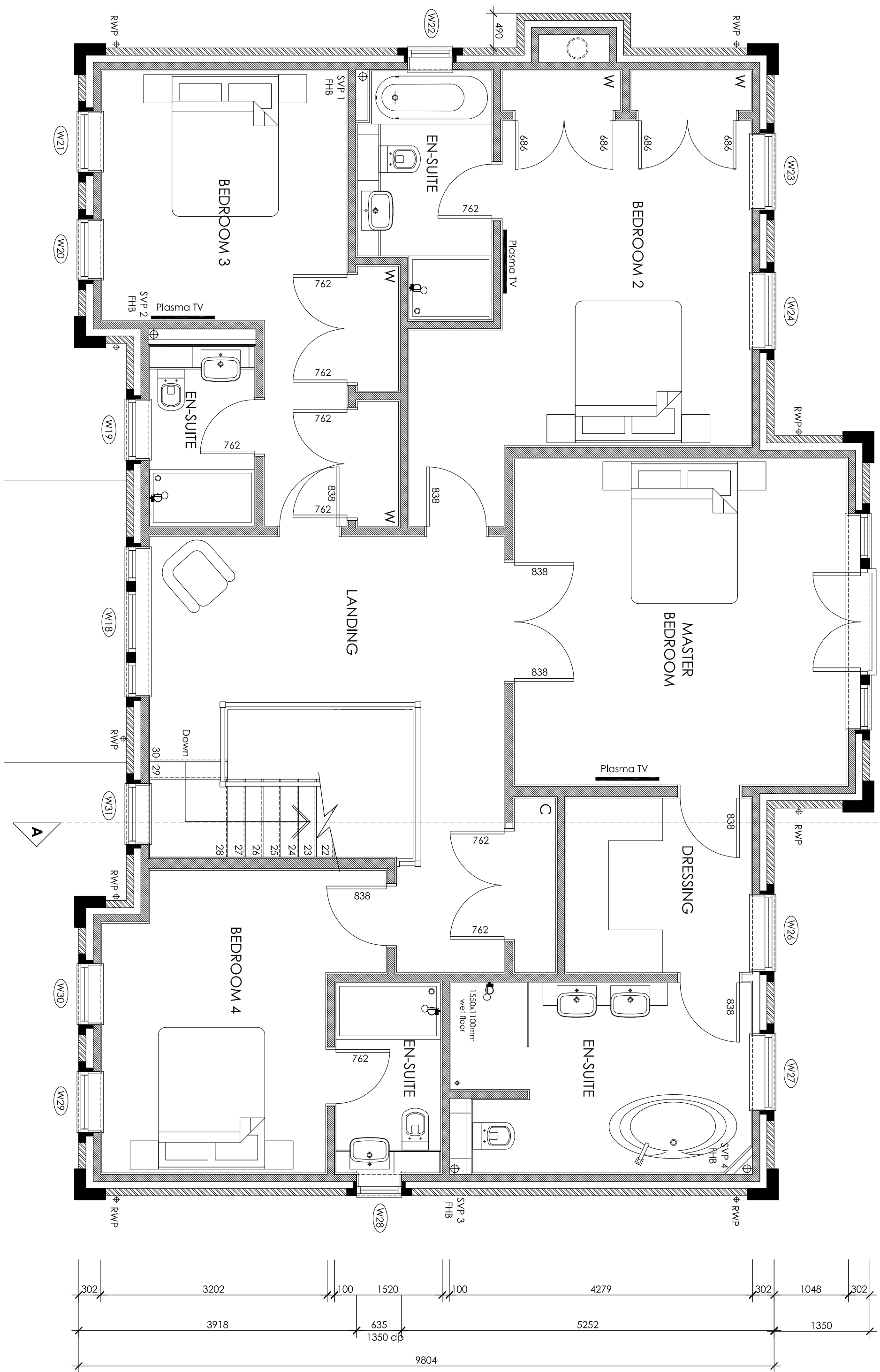
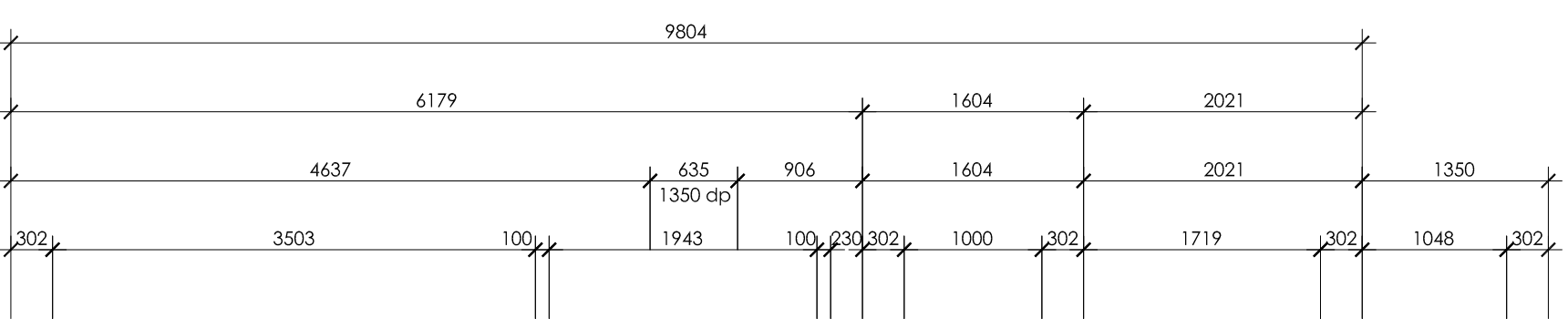
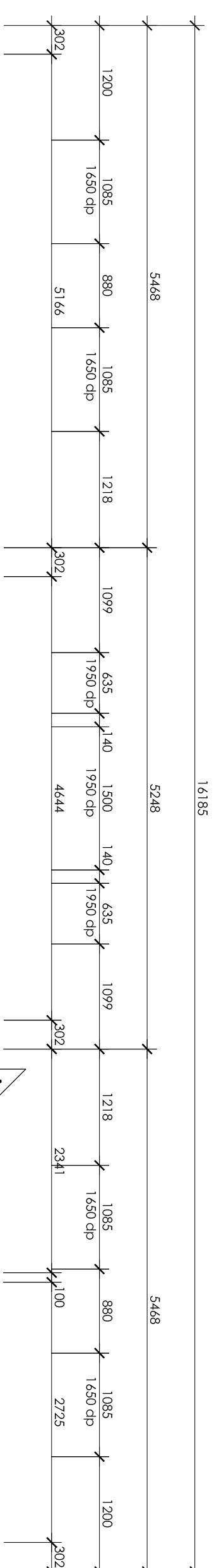
STRUCTURAL SUPPORT / STEEL REQUIREMENTS

-  Structural support shown indicative only, refer to engineers drawings & specification
-  Prestress in accordance with engineers drawings & specification

NOTE: ALL STEELWORK MUST BE SUPPLY PROTECTED WITH INTUMESCENT PAINT OR ENCASED WITH PLASTERBOARD TO ENSURE 30 MINUTES FIRE RESISTANCE IS ACHIEVED IN STRICT ACCORDANCE WITH THE MANUFACTURERS RECOMMENDATIONS

FLOOR AREAS (GROSS INTERNAL)

- Lower Ground Ground floor First floor Total
- 1541.29m² 1427.11m² 451.59m² (4231.24qf)
- 1427.11m²
- Note: For scale purposes all floor areas in rooms in roof are taken to 1500mm high outer walling.



FIRST FLOOR PLAN

Rev	Date	Details
A	04/01/13	External wall in Master Bedroom amended

PRELIMINARY

ark|tec Client: BRIDGEWATER NEW HOMES
 Architectural Consultancy Project: SILVERWOOD, WAYERLEY LANE,
 1 Fairburn Road VIRGINIA WATER,
 Galleary Sunnyside GUYZ 4RG
 Drawing: FIRST FLOOR PLAN
 T: 01483 549 047 Scale: 1:50 @ A1 Date: 07/12/12
 F: 01483 549 100
 E: info@arktec.co.uk
 W: www.arktec.co.uk

Drawing Number: T12/25/112 Revision: A